

PRACTICUM ON MIGRATION PRESSURES
SIS-793-004-2015s

Tuesdays (5:30-8:00pm) - Spring 2015
MGC 312

Fulton Armstrong
Adjunct Professor
farmstro@american.edu
(202) 885-6178

Office hours: *please e-mail to schedule*
Center for Latin American and Latino Studies
4545 42nd St., NW, Suite 308
Washington, DC 20016

Course Objectives

This Practicum gives students hands-on experience on a team focused on a specific foreign policy issue for interested, committed clients. Students meet with their clients, assess the clients' needs, and design and implement an efficient, effective strategy to research, analyze, assess policies, and develop policy recommendations in accordance with those needs. They examine the drivers of migration – the factors that push people to abandon their homeland and that pull them to the United States – and analyze how the policies and programs of the United States and its partners could better address those causes.

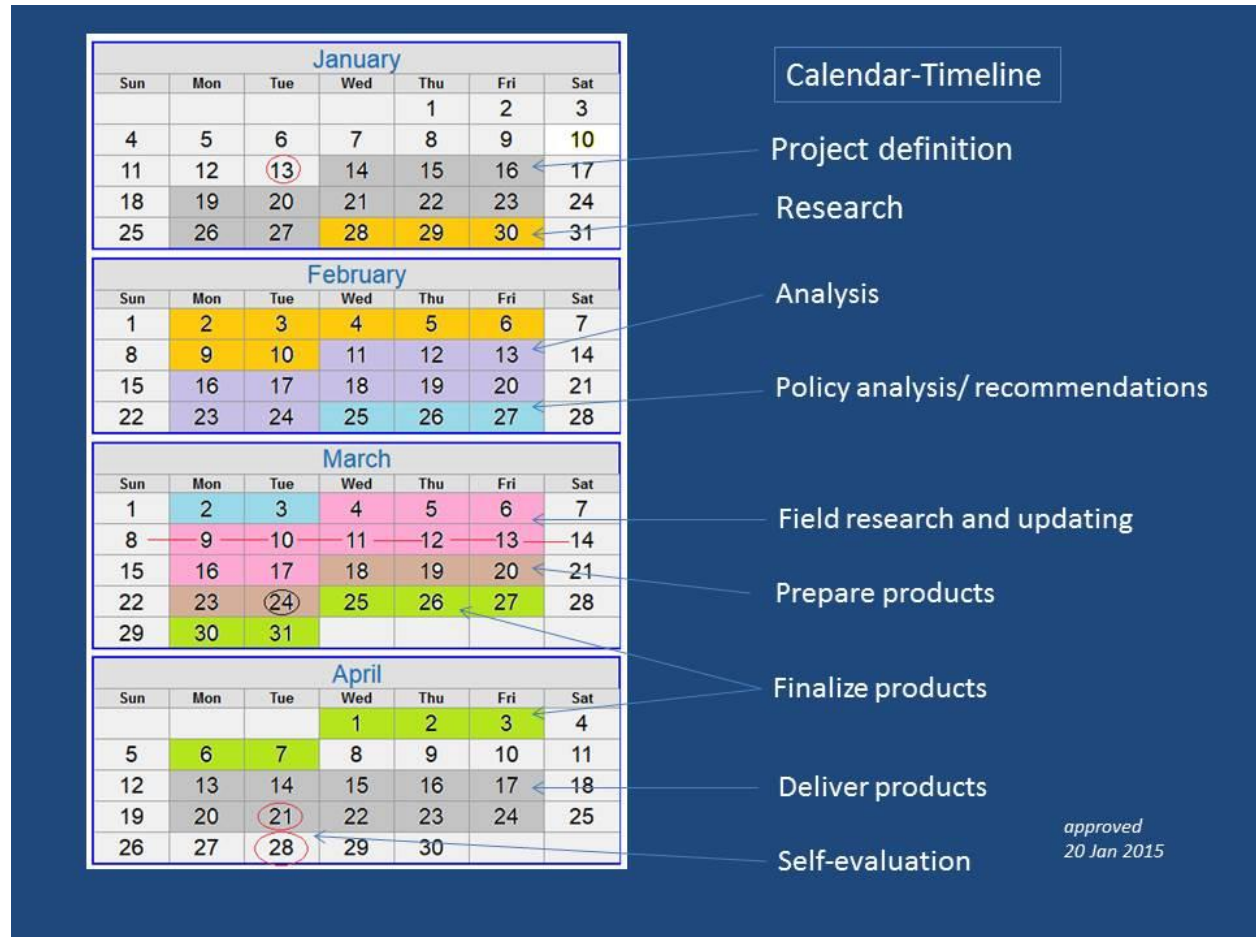
The Practicum enables students to hone an array of skills by going deep on an important, evolving issue. They examine the questions of why the sending societies are so vulnerable, violent, and poor, as well as why institutions and civil society that could help stanch the migrant flow are so weak. Performing as professionals, the Practicum team consults with U.S. government and nongovernmental experts in U.S. border areas and, security conditions permitting, travels to a sending country or community to answer these questions. In addition to briefing institutional clients, the team presents its conclusions to help the media improve coverage of the migration problem.

Outcomes

Upon completion of this course, you will have a better feel for how research, analysis, policy assessment and the development of policy options come together in a comprehensive process specifically designed to meet clients' current and future needs. You will learn, adapt, and implement an analytical model to suit this and other projects you will undertake. You will also become familiar with the different styles of writing, analyzing and presenting information in each context, and of presenting decision options – in a manner compatible with your clients' needs and institutional culture. In general terms, you will be better able to track policy debate in Washington and evaluate where you may fit in professionally in future endeavors.

Class Schedule, Readings, Deliverables

The schedule, reading assignments and deliverables for this Practicum are determined by the Team and, in this project, the “Country Teams” – based on the clients’ requirements. Here is the timeline the Team agreed to during the first and second classes:



Grades

Your grade will depend on the following: the quality and quantity of your participation in class, Team, and Country Team discussions (20 percent); your contributions on Blackboard (20 percent); the quality and sophistication of the summaries and analysis of your research, as presented to your Country Teams, class and the clients, and the policy recommendations you develop (25 percent) ; your contributions to final products for the clients (25 percent); and your reflections on “lessons learned” at end of project (10 percent).

Academic Integrity

You are expected to abide by the Academic Integrity Code of American University (available online at <http://www.american.edu/academics/integrity.htm>).

Disability Support at American University

American University is committed to ensuring accessibility for all qualified students with disabilities to university programs and activities. In order to promote full participation on campus, one of two offices may be of assistance. The Academic Support Center (ASC) works with students with learning disabilities and Attention Deficit Disorder. Disability Support Services (DSS) works with students with physical and psychological disabilities.

Emergency Preparedness

In the event of a declared pandemic (influenza or other communicable disease), American University will implement a plan for meeting the needs of all members of the university community. Should the university be required to close for a period of time, we are committed to ensuring that all aspects of our educational programs will be delivered to our students. These may include altering and extending the duration of the traditional term schedule to complete essential instruction in the traditional format and/or use of distance instructional methods. Specific strategies will vary from class to class, depending on the format of the course and the timing of the emergency. Faculty will communicate class-specific information to students via AU e-mail and Blackboard, while students must inform their faculty immediately of any absence due to illness. Students are responsible for checking their AU e-mail regularly and keeping themselves informed of emergencies. In the event of a declared pandemic or other emergency, you should refer to the AU website (<http://www.american.edu/emergency>) and the AU information line at (202) 885-1100 for general university-wide information, as well as contact their faculty and/or respective dean's office for course and school/ college-specific information.