

NORTHERN TRIANGLE MIGRATION CHALLENGES

American University
School of International Service
Spring 2019
Practicum Team

REGIONAL FOCUS: NORTHERN TRIANGLE COUNTRIES

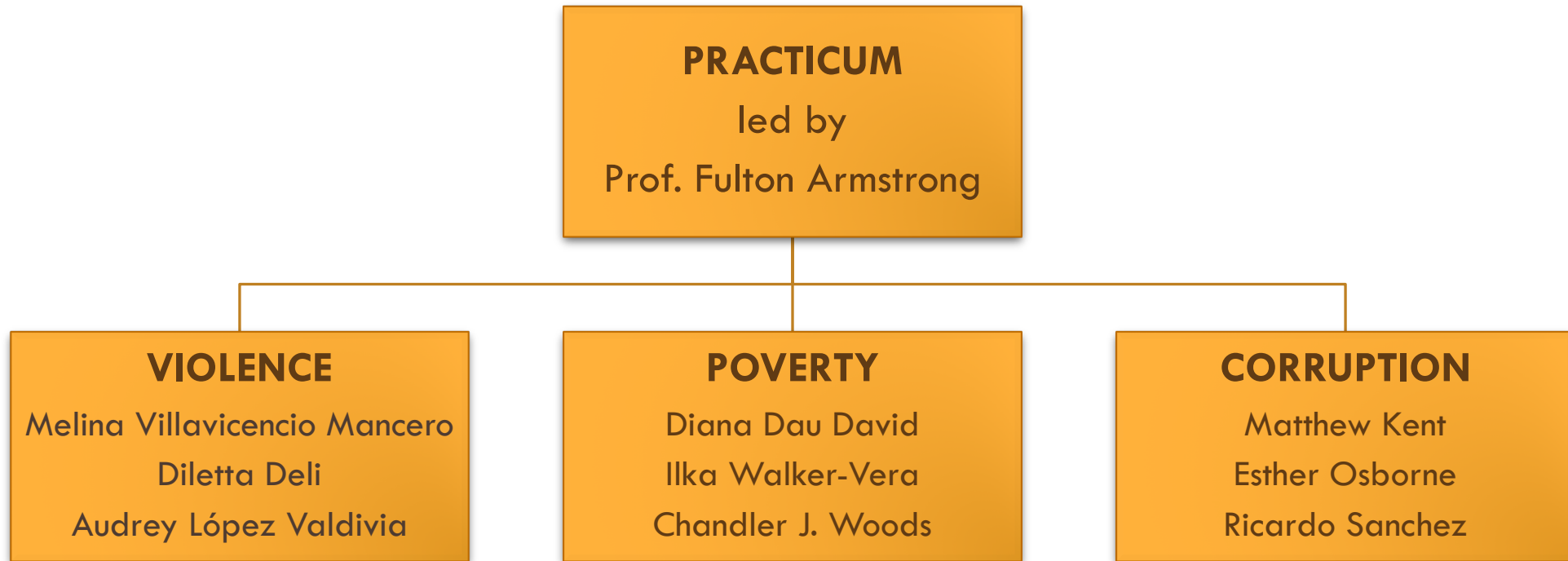


ROADMAP

- Team
- Methodology
- Key Judgments
- Recommendations
- Conclusions
- Questions



THE TEAM



METHODOLOGY



PUBLISHED
SOURCES



KEY INFORMANT
INTERVIEWS



CONFERENCES
AND PANELS



FIELD RESEARCH IN
GUATEMALA & MEXICO



KEY JUDGMENTS

Legacy of Violence
&
Fragile Institutions

Normalization of
Sexual and Gender-
Based Violence
(SGBV)

Poor Governance

Exclusionary Systems

Poor Infrastructure

Lack of Identity
and Community

Corruption
&
Impunity





POLICY RECOMMENDATIONS



**NORTHERN TRIANGLE MIGRATION
CHALLENGES: VIOLENCE,
POVERTY, AND CORRUPTION**

AMERICAN UNIVERSITY
SCHOOL OF INTERNATIONAL SERVICE
PRACTICUM TEAM
SPRING 2019

ANALYSIS

GANG VIOLENCE

Prison system headquarters
Barrio 18 and MS13

“CENTERS FOR VIOLENCE REDUCTION”

ACTIONS

By: Melina Villavicencio Mancero

Legal counseling
Education and training
Job placement

IMPACT

Weaken gang networks
Reduce violence



COMMUNITY VIOLENCE

“RURAL COMMUNITY WATCH”

By: Diletta Deli

ANALYSIS

High rates of insecurity
State absence
Easy availability of firearms

ACTIONS

Regularization & training
Community-driven

IMPACT

Increase security
Improve accountability & inclusion



SEXUAL & GENDER-BASED VIOLENCE

“PROMOTORAS COMUNITARIAS”

By: Audrey López Valdivia

ANALYSIS

Femicide
Fear of reporting
Limited knowledge

ACTIONS

Legal education
Community engagement

IMPACT

Increase legal empowerment
Increase awareness



POVERTY - INFRASTRUCTURE

“ENHANCE PARTNERSHIPS”

By: Diana Dau David

ANALYSIS

Poor infrastructure
Local and cultural component

ACTIONS

In-country office and liaisons
Cultural training
Corporate partnerships

IMPACT

Improve local infrastructure
Reduce poverty



POVERTY — EDUCATION

“HELPING AT-RISK MOTHERS”

By: Ilka Walker-Vera

ANALYSIS

Malnourished women
Low educational rates
Food insecurity

ACTIONS

Weekly inclusive workshops
Community leaders' training
Conditional incentive

IMPACT

Decrease malnutrition emigration
Secure community engagement
Increase education for women



POVERTY - ENTREPRENEURSHIP

“COMMUNITY TRAINING CENTERS”

By: Chandler J. Woods

ANALYSIS

Limited education
Unprepared workforce
Lack of investment

ACTIONS

Workforce development
Entrepreneurship
Innovative & targeted

IMPACT

Increase job opportunities
Increase Human Development Index



REPORTING CORRUPTION

“BRINGING CORRUPTION TO LIGHT”

By: Matthew Kent

ANALYSIS

High rates of corruption
Impunity
Low levels of citizen involvement

ACTIONS

Confidential reporting mechanisms
Political awareness
Accountability

IMPACT

Promote good governance
Increase political participation



TRACKING CORRUPTION

“ANTI-CORRUPTION COMMITMENT TRACKER”

By: Esther Osborne

ANALYSIS

Reduced faith in institutions
Lack of enforcement
Unreliable data

ACTIONS

Monitor implementation & progress
Public online database

IMPACT

Increase transparency
Improve anti-corruption coalitions



ANALYSIS

COUNTERING CORRUPTION

Impunity and obstruction
Lack of support and coordination

ACTIONS

“REVITALIZE CICIG AND MACCIH”

Rebrand and refocus
International coordination
Communication strategy

IMPACT

By: Ricardo Sanchez

Highlight institution building and results
Divesture from corruption
Strengthen institutions





CONCLUSIONS



QUESTIONS?





THANK YOU

